

PROJECT SUMMARY

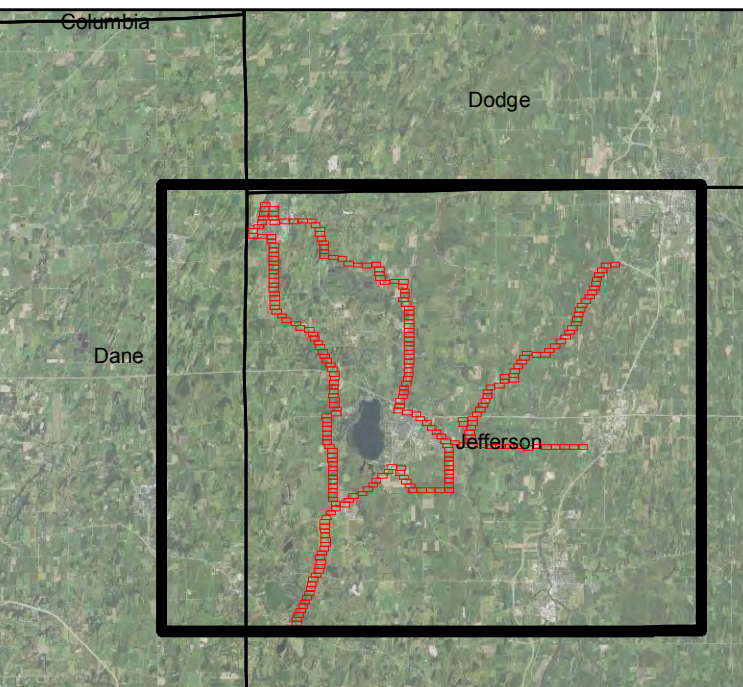
PROJECT TO INSTALL FIBER UNDERGROUND TO CUSTOMERS IN JEFFERSON COUNTY WI. THIS PROJECT IS FOR THE LAKE MILLS OLT

PROJECT INFORMATION

PROJECT MANAGER	BUG TUSSEL
PAUL CARRICK SR. MANAGER OF TECHNICAL ENGINEERING SERVICES paul.carrick@ccisystems.com c:920-606-5801	MATTHEW KELLEY NETWORK ENGINEER matt.kelley@ccisystems.com
JOHN SCOTT GIS PROGRAM MANAGER john.scott@ccisystems.com c: (616) 502-5403	LUKE AL-SAAD GIS TECHNICIAN luke.alsaadi@ccisystems.com c 920-268-6623

DRAWING INDEX

1.....	TITLE PAGE & OVERVIEW
2.....	BOM
3.....	GENERAL CONSTRUCTION NOTES
4.....	WETLAND BORING
5.....	FIBER PANEL DETAILS
6.....	GENERAL FIBER SPLICING
7.....	HANDHOLE DETAIL
8.....	BUILDING ENTRANCE DETAIL
9.....	WORK ZONE FLAGGING
10-266.....	CUT SHEETS 1 TO 257



STAKED BY: LUKE AL-SAAD
DATE: 09/07/2023

APPROVED BY: _____
DATE: _____

RELEASED FOR CONT. DATE: _____



JEFFERSON LMDC OVERVIEW



PROJECT: LAKE MILLS OLT
WORK ORDER: _____
COUNTY: JEFFERSON

EXCHANGE: _____
FIBER ROUTE: _____
PART #: 1 of 1

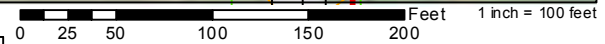


Place proposed facilities within right-of-way based on permit requirements and existing utilities locates as provided by State One-Call system

S PAGE

MAP NOT TO SCALE

Proposed Route 3' off ROW Unless Otherwise Denoted



ACCESS POINT	BM61 (4)D-R	BM61 (4)D-U	BM60 DR	BH4	BH2	BHFP	BM55	BM53	BMXX	BM2 (5/8)(8)	BM2 (5/8)(4)	BFOV (4)	BFOV (1.25)	BMBM FOV	BFOI (288)	BFOI (144)	BFOI (96)	BFOI (48)	BFOI (24)	BFO (288)	BFO (144)	BFO (96)	BFO (48)	BFO (24)	HBFO (288)	HBFO (144)	HBFO (96)	HBFO (48)	HBFO (24)	HO1
3000/24	-	345	-	-	1	-	1	1	-	1	-	345	-	-	345	-	345	-	-	100	-	100	-	-	-	-	-	-	-	-
3000/25	-	50	-	-	1	-	1	2	-	-	-	50	-	-	50	-	50	-	-	100	-	100	-	-	-	-	-	-	-	
3000/26	-	745	-	-	1	-	1	1	-	-	-	745	-	-	745	-	745	-	-	100	-	100	-	-	-	-	-	-	-	
3000/27	-	360	-	1	1	-	1	1	-	-	-	360	-	-	360	-	360	-	-	100	-	100	-	-	-	-	-	-	-	
3000/27X	-	360	-	-	-	-	1	1	-	-	-	360	-	-	360	-	360	-	-	75	150	75	150	-	1	-	-	-	-	

Legend

Handholes

- Handhole, Medium
- Handhole, Large
- Flower Pot

Installation

- Direct Plow
- Bore Conduit
- 4Way & 1.25"
- Service Drop

Utility Type

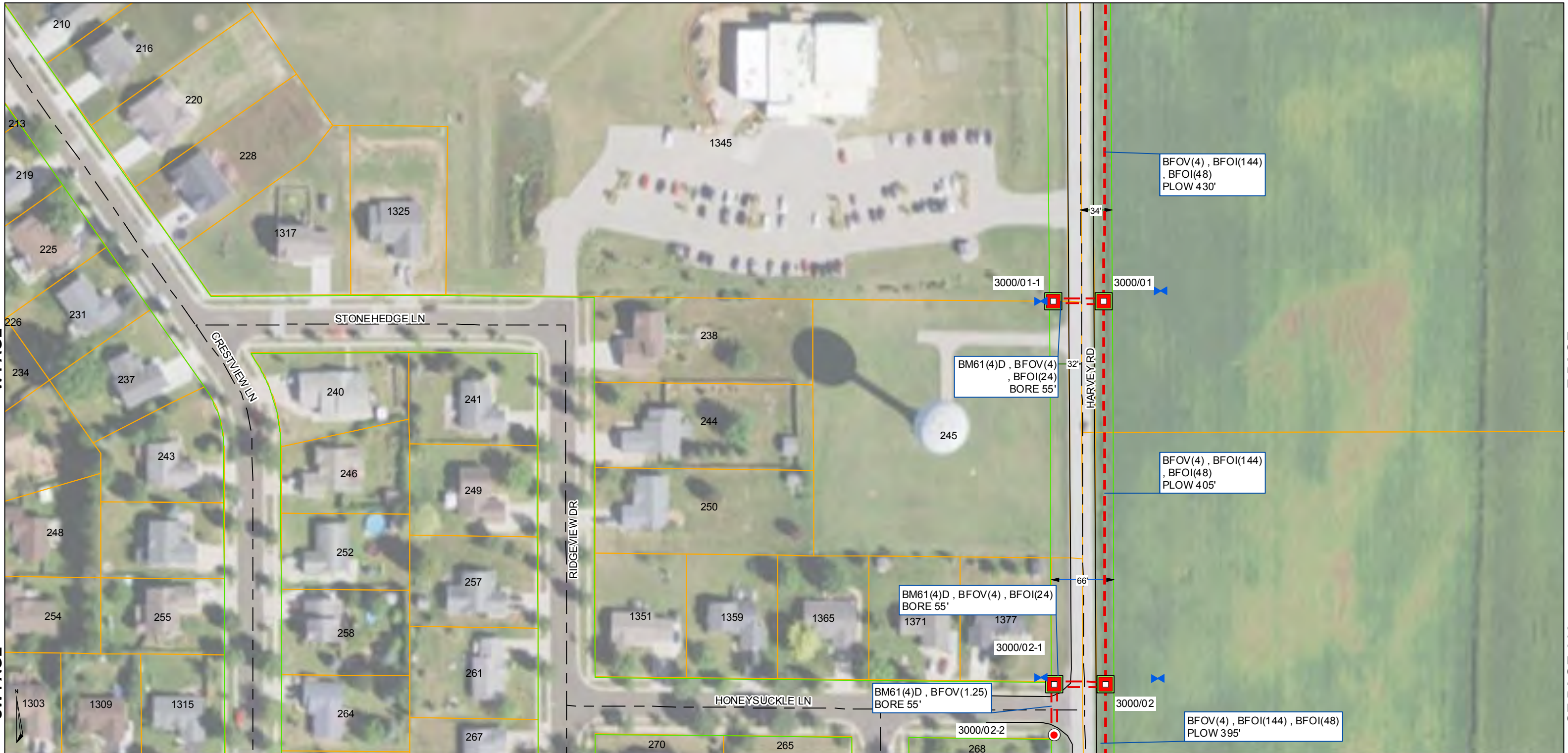
- ELECTRIC
- STORM
- GAS
- WATER
- COM
- SANITARY
- ELECTRIC PED
- TELCO PED
- FIBER VAULT

Notes

- Cut Sheets
- Centerline
- Edge of Pavement
- Parcel Boundary
- Public ROW
- Wetlands
- Fiber Slack Coil
- Splice 144F
- Splice 24F

Measure

- Bore Pit
- Culvert End
- Gas Valve
- Hydrant
- Survey Marker
- Ped, Existing
- Pole
- Paved Driveway
- Water
- C/L To Route
- C/L To ROW
- ROW To ROW

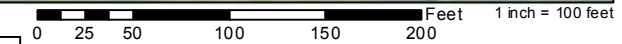


Place proposed facilities within right-of-way based on permit requirements and existing utilities locates as provided by State One-Call system

S PAGE 013

MAP NOT TO SCALE

Proposed Route 3' off ROW Unless Otherwise Denoted



ACCESS POINT	BM61 (4)D-R	BM61 (4)D-U	BM60 DR	BH4	BH2	BHFP	BM55	BM53	BMXX	BM2 (5/8)(8)	BM2 (5/8)(4)	BFOV (4)	BFOV (1.25)	BMBM FOV	BFOI (288)	BFOI (144)	BFOI (96)	BFOI (48)	BFOI (24)	BFO (288)	BFO (144)	BFO (96)	BFO (48)	BFO (24)	HBFO (288)	HBFO (144)	HBFO (96)	HBFO (48)	HBFO (24)	HO1
3000/01	95	-	-	-	1	-	1	-	-	1	-	525	-	-	-	525	-	525	-	100	-	100	50	-	-	-	-	-	-	-
3000/01-1	55	-	-	-	1	-	1	-	-	1	-	55	-	-	-	405	-	405	55	-	-	100	-	100	50	-	-	-	-	-
3000/02	-	-	-	-	1	-	1	-	-	1	-	405	-	-	-	405	-	405	55	-	-	100	-	100	50	-	-	-	-	-
3000/02-1	55	-	-	-	1	-	1	-	-	1	-	55	-	-	-	-	-	-	55	-	-	-	-	-	-	-	-	-	-	-
3000/02-2	55	-	-	-	-	1	-	-	-	-	-	-	55	-	-	-	-	-	-	-	-	-	-	-	-	-	-	-	-	-

Legend

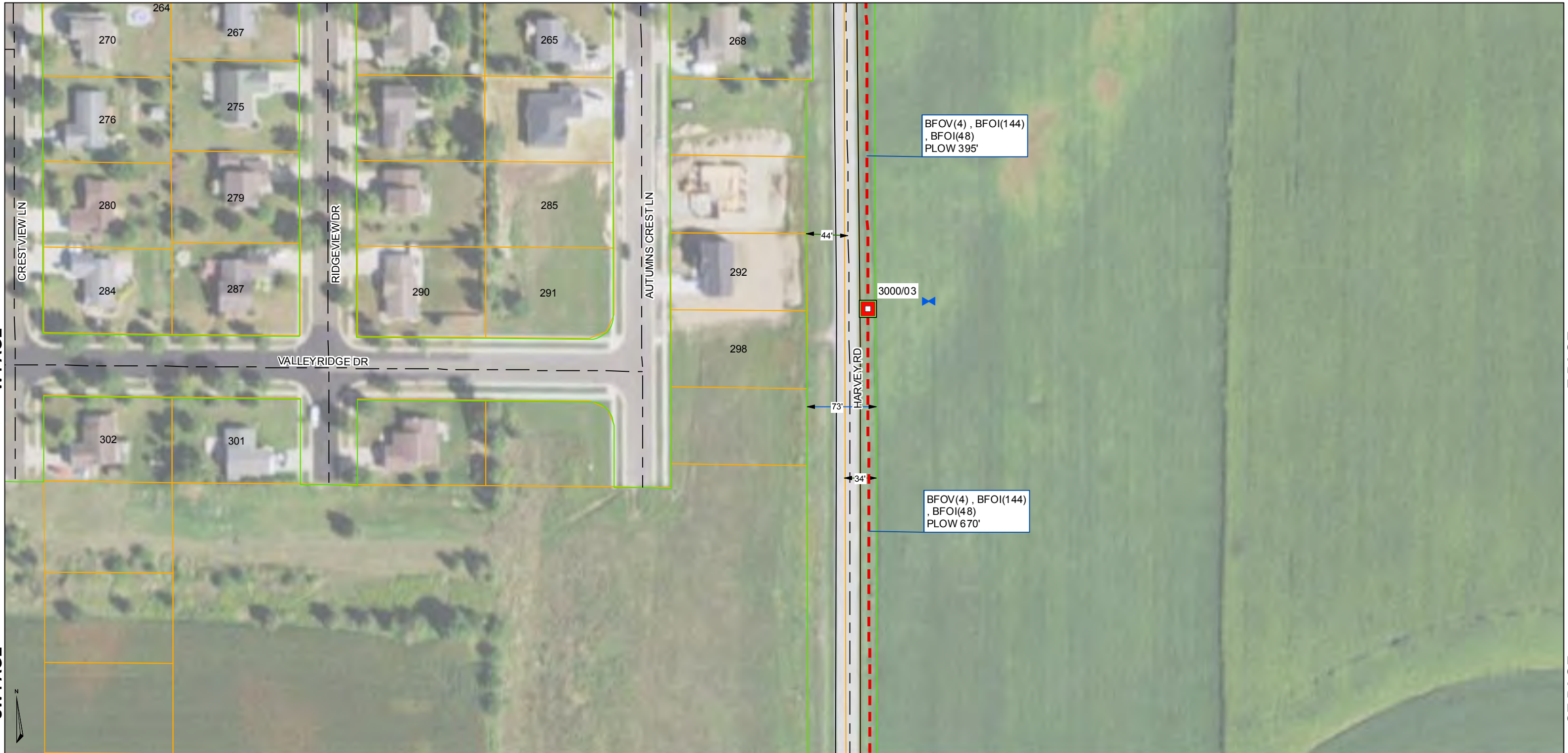
Handholes
 ■ Handhole, Medium
 ■ Handhole, Large
 ● Flower Pot

Installation
 - - - Direct Plow
 - - - Bore Conduit
 - - - 4Way & 1.25"
 - - - Service Drop

Utility Type
 E ELECTRIC
 S STORM
 G GAS
 W WATER

Notes
 - - - Cut Sheets
 - - - Centerline
 - - - Edge of Pavement
 - - - Parcel Boundary
 - - - Public ROW
 - - - Wetlands

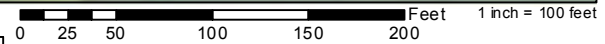
Other Symbols
 □ Bore Pit
 v Culvert End
 ● Gas Valve
 ● Hydrant
 ● Survey Marker
 □ Ped, Existing
 □ Pole
 □ Paved Driveway
 ● Water
 ● Measure
 → C/L To Route
 → C/L To ROW
 → ROW To ROW



Place proposed facilities within right-of-way based on permit requirements and existing utilities locates as provided by State One-Call system

MAP NOT TO SCALE

Proposed Route 3' off ROW Unless Otherwise Denoted



ACCESS POINT	BM61 (4)D-R	BM61 (4)D-U	BM60 DR	BH4	BH2	BHFP	BM55	BM53	BMXX	BM2 (5/8)(8)	BM2 (5/8)(4)	BFOV (4)	BFOV (1.25)	BMBM FOV	BFOI (288)	BFOI (144)	BFOI (96)	BFOI (48)	BFOI (24)	BFO (288)	BFO (144)	BFO (96)	BFO (48)	BFO (24)	HBFO (288)	HBFO (144)	HBFO (96)	HBFO (48)	HBFO (24)	HO1
3000/03	-	-	-	-	1	-	1	1	-	1	-	395	-	-	-	395	-	395	-	-	100	-	100	-	-	-	-	1	-	-

Legend

Handholes

- Hand hole, Medium
- Hand hole, Large
- Flower Pot

Installation

- Direct Plow
- Bore Conduit
- 4Way & 1.25"
- Service Drop

Utility Type

- ELECTRIC
- STORM
- GAS
- WATER
- COM
- SANITARY
- ELECTRIC PED
- TELCO PED
- FIBER VAULT

Notes

- Cut Sheets
- Centerline
- Edge of Pavement
- Parcel Boundary
- Public ROW
- Wetlands
- Fiber Slack Coil
- Splice 144F
- Splice 24F

Other Symbols

- Bore Pit
- Culvert End
- Gas Valve
- Hydrant
- Survey Marker
- Pole
- Paved Driveway
- Water

Measure

- C/L To Route
- C/L To ROW
- ROW To ROW

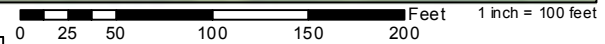


Place proposed facilities within right-of-way based on permit requirements and existing utilities locates as provided by State One-Call system

S PAGE 015

MAP NOT TO SCALE

Proposed Route 3' off ROW Unless Otherwise Denoted



ACCESS POINT	BM61 (4)D-R	BM61 (4)D-U	BM60 DR	BH4	BH2	BHFP	BM55	BM53	BMXX	BM2 (5/8)(8)	BM2 (5/8)(4)	BFOV (4)	BFOV (1.25)	BMBM FOV	BFOI (288)	BFOI (144)	BFOI (96)	BFOI (48)	BFOI (24)	BFO (288)	BFO (144)	BFO (96)	BFO (48)	BFO (24)	HBFO (288)	HBFO (144)	HBFO (96)	HBFO (48)	HBFO (24)	HO1
3000/04	-	-	-	-	1	-	1	1	-	1	-	670	-	-	-	670	-	670	-	100	-	100	-	-	-	-	-	-	-	-
3000/05	-	-	-	-	1	-	1	1	-	1	-	435	-	-	-	435	-	435	-	100	-	100	-	-	-	-	-	-	-	

Legend

Handholes

- Handhole, Medium
- Handhole, Large
- Flower Pot

Installation

- Direct Plow
- Bore Conduit
- 4Way & 1.25"
- Service Drop

Utility Type

- ELECTRIC
- STORM
- GAS
- WATER
- COM
- SANITARY
- ELECTRIC PED
- TELCO PED
- FIBER VAULT

Notes

- Cut Sheets
- Centerline
- Edge of Pavement
- Parcel Boundary
- Public ROW
- Wetlands
- Fiber Slack Coil
- Splice 144F
- Splice 24F

Measure

- C/L To Route
- C/L To ROW
- ROW To ROW

Other Symbols

- Bore Pit
- Culvert End
- Gas Valve
- Hydrant
- Survey Marker
- Pole
- Paved Driveway
- Water

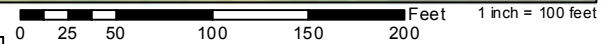


Place proposed facilities within right-of-way based on permit requirements and existing utilities locates as provided by State One-Call system

S PAGE 017

MAP NOT TO SCALE

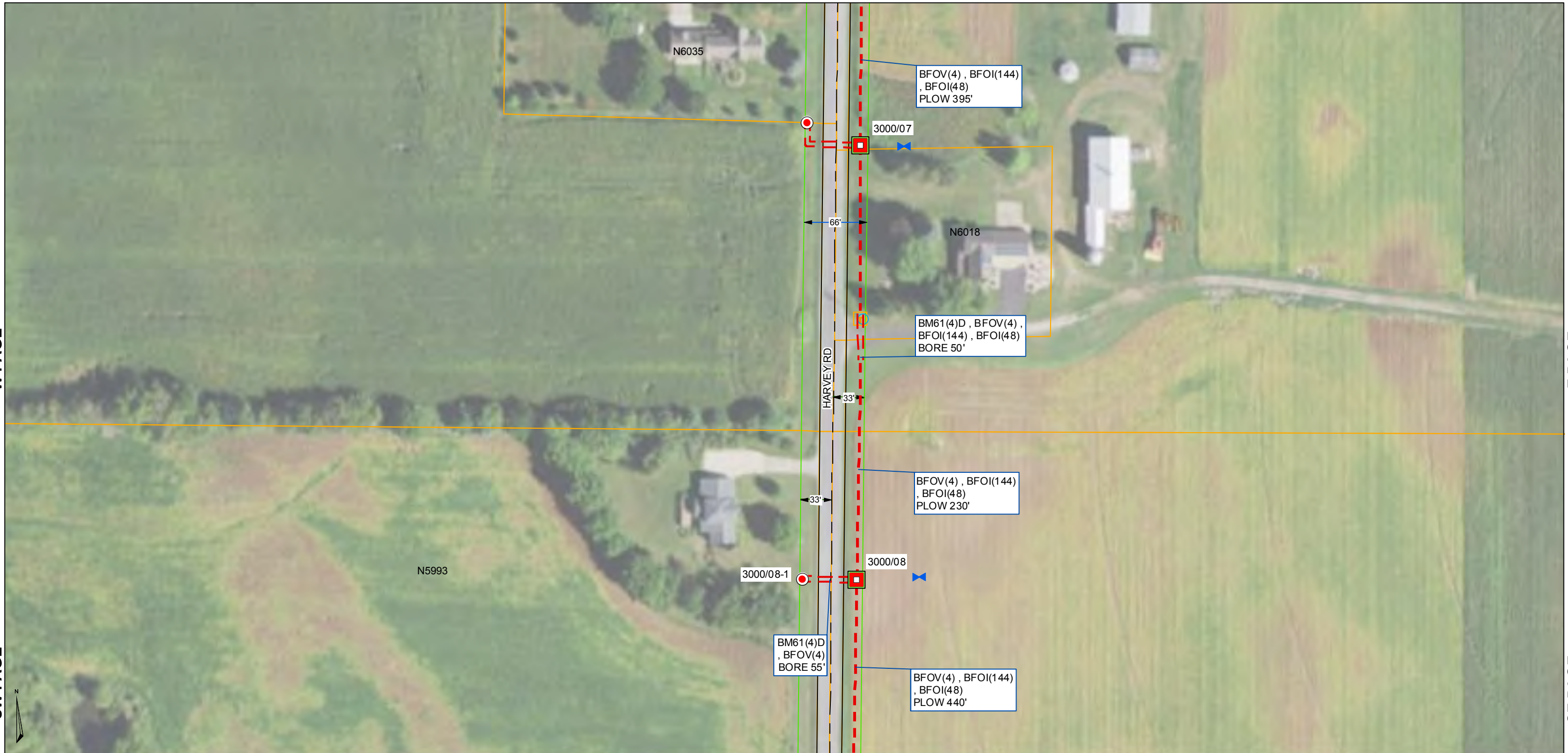
Proposed Route 3' off ROW Unless Otherwise Denoted



ACCESS POINT	BM61 (4)D-R	BM61 (4)D-U	BM60 DR	BH4	BH2	BHFP	BM55	BM53	BMXX	BM2 (5/8)(8)	BM2 (5/8)(4)	BFOV (4)	BFOV (1.25)	BMBM FOV	BFOI (288)	BFOI (144)	BFOI (96)	BFOI (48)	BFOI (24)	BFO (288)	BFO (144)	BFO (96)	BFO (48)	BFO (24)	HBFO (288)	HBFO (144)	HBFO (96)	HBFO (48)	HBFO (24)	HO1	
3000/06	-	-	-	-	1	-	1	1	-	1	-	1515	-	-	-	1515	-	1515	-	-	100	-	100	-	-	-	-	-	-	-	-
3000/06-1	50	-	-	-	-	1	-	-	-	-	1	50	-	-	-	-	-	-	-	-	-	-	-	-	-	-	-	-	-	-	

Legend

Handholes	Notes	Measure
Handhole, Medium	Cut Sheets	C/L To Route
Handhole, Large	Centerline	C/L To ROW
Flower Pot	Edge of Pavement	ROW To ROW
Installation	Parcel Boundary	
Direct Plow	Public ROW	
Bore Conduit	Wetlands	
4Way & 1.25"	Fiber Slack Coil	
Service Drop	Splice 144F	
	Splice 24F	
Utility Type	COM	
ELECTRIC	SANITARY	
STORM	ELECTRIC PED	
GAS	TELCO PED	
WATER	FIBER VAULT	
	Bore Pit	
	Culvert End	
	Gas Valve	
	Hydrant	
	Survey Marker	
	Pole	
	Paved Driveway	
	Water	

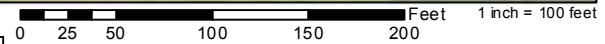


Place proposed facilities within right-of-way based on permit requirements and existing utilities locates as provided by State One-Call system

S PAGE 018

MAP NOT TO SCALE

Proposed Route 3' off ROW Unless Otherwise Denoted



ACCESS POINT	BM61 (4)D-R	BM61 (4)D-U	BM60 DR	BH4	BH2	BHFP	BM55	BM53	BMXX	BM2 (5/8)(8)	BM2 (5/8)(4)	BFOV (4)	BFOV (1.25)	BMBM FOV	BFOI (288)	BFOI (144)	BFOI (96)	BFOI (48)	BFOI (24)	BFO (288)	BFO (144)	BFO (96)	BFO (48)	BFO (24)	HBFO (288)	HBFO (144)	HBFO (96)	HBFO (48)	HBFO (24)	HO1
3000/07	-	-	-	-	1	-	1	1	-	1	-	395	-	-	-	395	-	395	-	100	-	100	-	-	-	-	-	-	-	-
3000/07-1	80	-	-	-	1	1	1	-	-	1	-	80	-	-	-	-	-	-	-	-	-	-	-	-	-	-	-	-	-	
3000/08	50	-	-	-	1	1	1	1	-	1	-	405	-	-	-	405	-	405	-	100	-	100	-	-	-	-	-	-	-	
3000/08-1	55	-	-	-	-	1	-	-	-	-	1	55	-	-	-	-	-	-	-	-	-	-	-	-	-	-	-	-	-	

Legend

Handholes

- Handhole, Medium
- Handhole, Large
- Flower Pot

Installation

- Direct Plow
- Bore Conduit
- 4Way & 1.25"
- Service Drop

Utility Type

- ELECTRIC
- STORM
- GAS
- WATER
- COM
- SANITARY
- ELECTRIC PED
- TELCO PED
- FIBER VAULT

Notes

- Cut Sheets
- Centerline
- Edge of Pavement
- Parcel Boundary
- Public ROW
- Wetlands
- Fiber Slack Coil
- Splice 144F
- Splice 24F

Measure

- C/L To Route
- C/L To ROW
- ROW To ROW

Other Symbols

- Bore Pit
- Culvert End
- Gas Valve
- Hydrant
- Survey Marker
- Pole, Existing
- Pole
- Paved Driveway
- Water

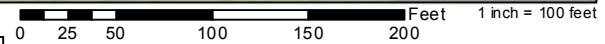


Place proposed facilities within right-of-way based on permit requirements and existing utilities locates as provided by State One-Call system

S PAGE 019

MAP NOT TO SCALE

Proposed Route 3' off ROW Unless Otherwise Denoted



ACCESS POINT	BM61 (4)D-R	BM61 (4)D-U	BM60 DR	BH4	BH2	BHFP	BM55	BM53	BMXX	BM2 (5/8)(8)	BM2 (5/8)(4)	BFOV (4)	BFOV (1.25)	BMBM FOV	BFOI (288)	BFOI (144)	BFOI (96)	BFOI (48)	BFOI (24)	BFO (288)	BFO (144)	BFO (96)	BFO (48)	BFO (24)	HBFO (288)	HBFO (144)	HBFO (96)	HBFO (48)	HBFO (24)	HO1
3000/09	-	-	-	-	1	-	1	1	-	1	-	440	-	-	-	440	-	440	-	-	100	-	100	-	-	-	-	1	-	-

Legend

Handholes

- Handhole, Medium
- Handhole, Large
- Flower Pot

Installation

- Direct Plow
- Bore Conduit
- 4Way & 1.25"
- Service Drop

Utility Type

- ELECTRIC
- STORM
- GAS
- WATER
- COM
- SANITARY
- ELECTRIC PED
- TELCO PED
- FIBER VAULT

Notes

- Cut Sheets
- Centerline
- Edge of Pavement
- Parcel Boundary
- Public ROW
- Wetlands
- Fiber Slack Coil
- Splice 144F
- Splice 24F

Measure

- C/L To Route
- C/L To ROW
- ROW To ROW

Other Symbols

- Bore Pit
- Culvert End
- Gas Valve
- Hydrant
- Survey Marker
- Pole
- Paved Driveway
- Water

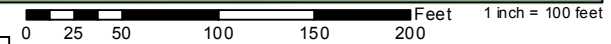


Place proposed facilities within right-of-way based on permit requirements and existing utilities locates as provided by State One-Call system

S PAGE 020

MAP NOT TO SCALE

Proposed Route 3' off ROW Unless Otherwise Denoted



ACCESS POINT	BM61 (4)D-R	BM61 (4)D-U	BM60 DR	BH4	BH2	BHFP	BM55	BM53	BMXX	BM2 (5/8)(8)	BM2 (5/8)(4)	BFOV (4)	BFOV (1.25)	BMBM FOV	BFOI (288)	BFOI (144)	BFOI (96)	BFOI (48)	BFOI (24)	BFO (288)	BFO (144)	BFO (96)	BFO (48)	BFO (24)	HBFO (288)	HBFO (144)	HBFO (96)	HBFO (48)	HBFO (24)	HO1
3000/10	-	-	-	-	1	-	1	1	-	1	-	520	-	-	-	520	-	520	-	100	-	100	-	-	-	-	-	-	-	-
3000/10-1	55	-	-	-	1	1	-	-	-	1	-	55	-	-	-	-	-	-	-	-	-	-	-	-	-	-	-	-	-	
3000/11	-	-	-	-	-	-	-	-	-	-	-	335	-	-	-	335	-	335	-	100	-	100	-	-	-	-	-	-	-	

Legend

Handholes

- Hand hole, Medium
- Hand hole, Large
- Flower Pot

Installation

- Direct Plow
- Bore Conduit
- 4Way & 1.25"
- Service Drop

Utility Type

- ELECTRIC
- STORM
- GAS
- WATER
- COM
- SANITARY
- ELECTRIC PED
- TELCO PED
- FIBER VAULT

Notes

- Cut Sheets
- Centerline
- Edge of Pavement
- Parcel Boundary
- Public ROW
- Wetlands
- Fiber Slack Coil
- Splice 144F
- Splice 24F

Other Symbols

- Bore Pit
- Culvert End
- Gas Valve
- Hydrant
- Survey Marker
- Ped, Existing
- Pole
- Paved Driveway
- Water

Measure

- C/L To Route
- C/L To ROW
- ROW To ROW

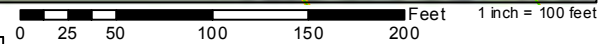


Place proposed facilities within right-of-way based on permit requirements and existing utilities locates as provided by State One-Call system

S PAGE

MAP NOT TO SCALE

Proposed Route 3' off ROW Unless Otherwise Denoted



ACCESS POINT	BM61 (4)D-R	BM61 (4)D-U	BM60 DR	BH4	BH2	BHFP	BM55	BM53	BMXX	BM2 (5/8)(8)	BM2 (5/8)(4)	BFOV (4)	BFOV (1.25)	BMBM FOV	BFOI (288)	BFOI (144)	BFOI (96)	BFOI (48)	BFOI (24)	BFO (288)	BFO (144)	BFO (96)	BFO (48)	BFO (24)	HBFO (288)	HBFO (144)	HBFO (96)	HBFO (48)	HBFO (24)	HO1
3000/12	-	-	-	-	1	-	1	1	-	1	-	470	-	-	-	470	-	470	-	100	-	100	-	-	-	-	-	-	-	-
3000/12-1	55	-	-	-	-	1	-	-	-	-	1	55	-	-	-	-	-	-	-	-	-	-	-	-	-	-	-	-	-	

Legend

Handholes

- Handhole, Medium
- Handhole, Large
- Flower Pot

Installation

- Direct Plow
- Bore Conduit
- 4Way & 1.25"
- Service Drop

Utility Type

- ELECTRIC
- STORM
- GAS
- WATER
- COM
- SANITARY
- ELECTRIC PED
- TELCO PED
- FIBER VAULT

Notes

- Cut Sheets
- Centerline
- Edge of Pavement
- Parcel Boundary
- Public ROW
- Wetlands
- Fiber Slack Coil
- Splice 144F
- Splice 24F

Measure

- C/L To Route
- C/L To ROW
- ROW To ROW

Other Symbols

- Bore Pit
- Culvert End
- Gas Valve
- Hydrant
- Survey Marker
- Ped, Existing
- Pole
- Paved Driveway
- Water

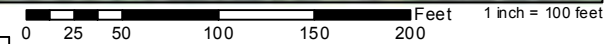


Place proposed facilities within right-of-way based on permit requirements and existing utilities locates as provided by State One-Call system

S PAGE

MAP NOT TO SCALE

Proposed Route 3' off ROW Unless Otherwise Denoted



ACCESS POINT	BM61 (4)D-R	BM61 (4)D-U	BM60 DR	BH4	BH2	BHFP	BM55	BM53	BMXX	BM2 (5/8)(8)	BM2 (5/8)(4)	BFOV (4)	BFOV (1.25)	BMBM FOV	BFOI (288)	BFOI (144)	BFOI (96)	BFOI (48)	BFOI (24)	BFO (288)	BFO (144)	BFO (96)	BFO (48)	BFO (24)	HBFO (288)	HBFO (144)	HBFO (96)	HBFO (48)	HBFO (24)	HO1	
3000/14	645	-	-	-	1	-	1	1	-	1	-	645	-	-	645	645	645	645	645	100	100	-	-	-	-	-	-	-	-	-	-
3000/15	315	-	-	-	1	-	1	1	-	1	-	315	-	-	315	315	315	315	100	100	-	-	-	-	-	-	-	-	-	-	-
3000/16	435	-	-	-	1	-	1	1	-	1	-	490	-	-	490	490	490	490	100	100	-	-	-	-	-	-	-	-	-	-	-
3000/16-1	30	-	-	-	-	1	-	1	-	1	-	30	-	-	-	-	-	-	-	-	-	-	-	-	-	-	-	-	-	-	-

Legend

Handholes

- Handhole, Medium
- Handhole, Large
- Flower Pot

Installation

- Direct Plow
- Bore Conduit
- 4Way & 1.25"
- Service Drop

Utility Type

- ELECTRIC
- STORM
- GAS
- WATER
- COM
- SANITARY
- ELECTRIC PED
- TELCO PED
- FIBER VAULT

Notes

- Cut Sheets
- Centerline
- Edge of Pavement
- Parcel Boundary
- Public ROW
- Wetlands
- Fiber Slack Coil
- Splice 144F
- Splice 24F

Measure

- C/L To Route
- C/L To ROW
- ROW To ROW

Other Symbols

- Bore Pit
- Culvert End
- Gas Valve
- Hydrant
- Survey Marker
- Pole, Existing
- Paved Driveway
- Water

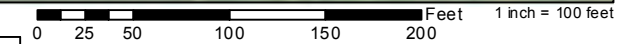


Place proposed facilities within right-of-way based on permit requirements and existing utilities locates as provided by State One-Call system

S PAGE

MAP NOT TO SCALE

Proposed Route 3' off ROW Unless Otherwise Denoted



ACCESS POINT	BM61 (4)D-R	BM61 (4)D-U	BM60 DR	BH4	BH2	BHFP	BM55	BM53	BMXX	BM2 (5/8)(8)	BM2 (5/8)(4)	BFOV (4)	BFOV (1.25)	BMBM FOV	BFOI (288)	BFOI (144)	BFOI (96)	BFOI (48)	BFOI (24)	BFO (288)	BFO (144)	BFO (96)	BFO (48)	BFO (24)	HBFO (288)	HBFO (144)	HBFO (96)	HBFO (48)	HBFO (24)	HO1
3000/16X	-	-	-	1	-	-	1	1	-	1	-	1160	-	-	1160	-	1160	-	-	100	-	100	-	-	-	-	-	-	-	-
3000/17	175	-	-	-	1	-	1	1	-	1	-	175	-	-	175	-	-	-	100	-	100	-	-	-	-	-	-	-	-	-
3000/17-1	60	-	-	-	-	-	-	-	-	-	-	60	-	-	-	-	-	-	-	-	-	-	-	-	-	-	-	-	-	-
3000/18	235	-	-	-	1	-	1	1	-	1	-	235	-	-	235	-	235	-	-	100	-	100	-	-	-	-	-	-	-	-
3000/18-1	80	-	-	-	-	-	-	-	-	-	-	80	-	-	-	-	-	-	-	-	-	-	-	-	-	-	-	-	-	-

Legend

Handholes

- Handhole, Medium
- Handhole, Large
- Flower Pot

Installation

- Direct Plow
- Bore Conduit
- 4Way & 1.25"
- Service Drop

Utility Type

- ELECTRIC
- STORM
- GAS
- WATER
- COM
- SANITARY
- ELECTRIC PED
- TELCO PED
- FIBER VAULT

Notes

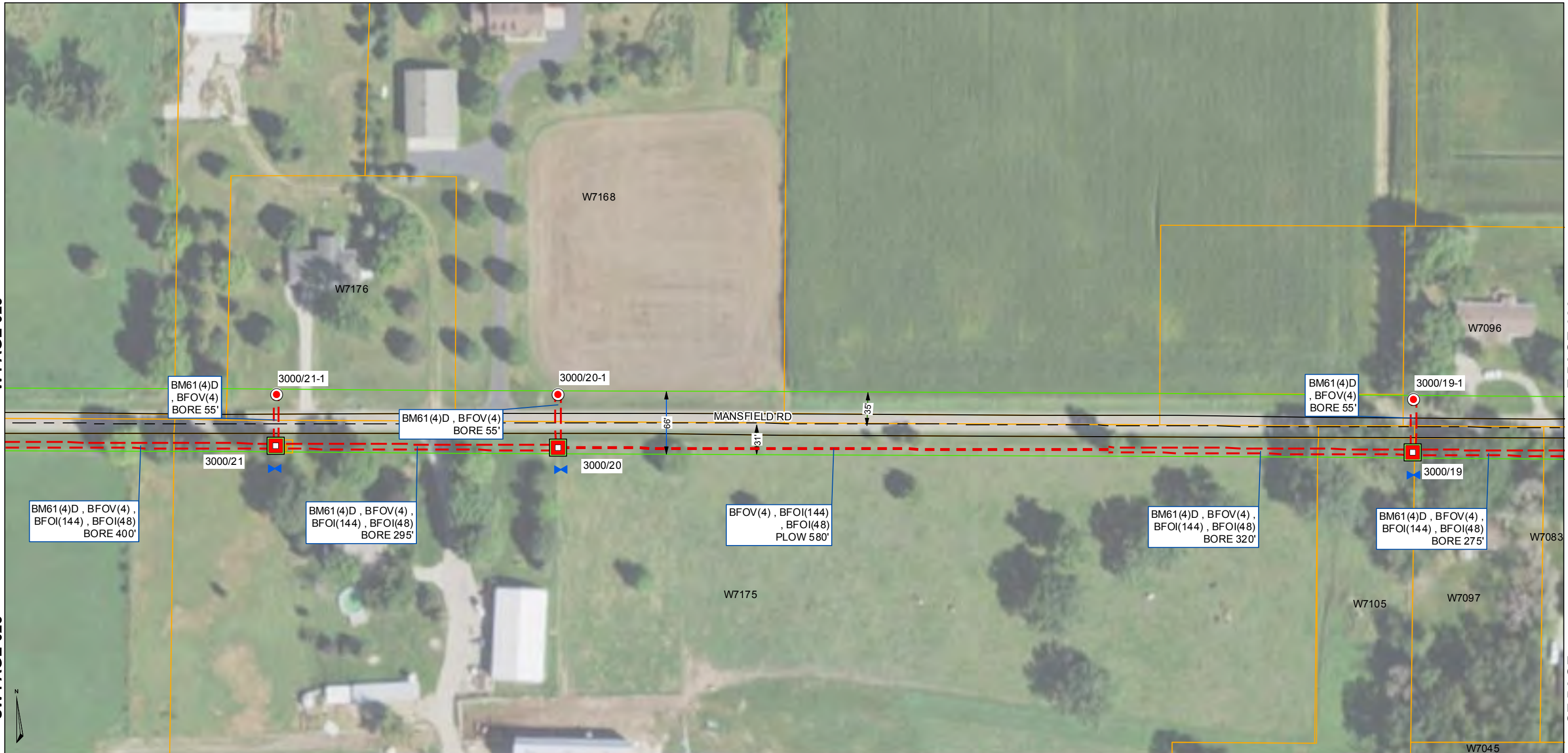
- Cut Sheets
- Centerline
- Edge of Pavement
- Parcel Boundary
- Public ROW
- Wetlands
- Fiber Slack Coil
- Splice 144F
- Splice 24F

Other Symbols

- Bore Pit
- Culvert End
- Gas Valve
- Hydrant
- Survey Marker
- Pole, Existing
- Pole
- Paved Driveway
- Water

Measure

- C/L To Route
- C/L To ROW
- ROW To ROW

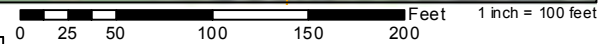


Place proposed facilities within right-of-way based on permit requirements and existing utilities locates as provided by State One-Call system

S PAGE

MAP NOT TO SCALE

Proposed Route 3' off ROW Unless Otherwise Denoted



ACCESS POINT	BM61 (4)D-R	BM61 (4)D-U	BM60 DR	BH4	BH2	BHFP	BM55	BM53	BMXX	BM2 (5/8)(8)	BM2 (5/8)(4)	BFOV (4)	BFOV (1.25)	BMBM FOV	BFOI (288)	BFOI (144)	BFOI (96)	BFOI (48)	BFOI (24)	BFO (288)	BFO (144)	BFO (96)	BFO (48)	BFO (24)	HBFO (288)	HBFO (144)	HBFO (96)	HBFO (48)	HBFO (24)	HO1
3000/19	275	-	-	-	1	-	1	1	-	1	-	275	-	-	-	275	-	275	-	100	-	100	-	-	-	-	-	1	-	-
3000/19-1	55	-	-	-	1	1	1	-	-	1	-	55	-	-	-	900	-	900	-	100	-	100	-	-	-	-	-	1	-	-
3000/20	320	-	-	-	1	1	1	-	-	1	-	300	-	-	-	900	-	900	-	100	-	100	-	-	-	-	-	1	-	-
3000/20-1	55	-	-	-	1	1	1	-	-	1	-	55	-	-	-	295	-	295	-	100	-	100	-	-	-	-	-	1	-	-
3000/21	295	-	-	-	1	1	1	-	-	1	-	295	-	-	-	295	-	295	-	100	-	100	-	-	-	-	-	1	-	-
3000/21-1	55	-	-	-	1	-	-	-	-	1	-	55	-	-	-	-	-	-	-	-	-	-	-	-	-	-	-	-	-	-

Legend

Handholes

- Handhole, Medium
- Handhole, Large
- Flower Pot

Installation

- Direct Plow
- Bore Conduit
- 4Way & 1.25"
- Service Drop

Utility Type

- ELECTRIC
- STORM
- GAS
- WATER
- COM
- SANITARY
- ELECTRIC PED
- TELCO PED
- FIBER VAULT

Notes

- Cut Sheets
- Centerline
- Edge of Pavement
- Parcel Boundary
- Public ROW
- Wetlands
- Fiber Slack Coil
- Splice 144F
- Splice 24F

Measure

- C/L To Route
- C/L To ROW
- ROW To ROW

Other Symbols

- Bore Pit
- Culvert End
- Gas Valve
- Hydrant
- Survey Marker
- Ped, Existing
- Pole
- Paved Driveway
- Water

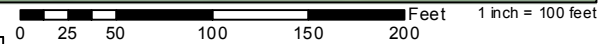


Place proposed facilities within right-of-way based on permit requirements and existing utilities locates as provided by State One-Call system

S PAGE

MAP NOT TO SCALE

Proposed Route 3' off ROW Unless Otherwise Denoted



ACCESS POINT	BM61(4)D-R	BM61(4)D-U	BM60DR	BH4	BH2	BHFP	BM55	BM53	BMXX	BM2(5/8)(8)	BM2(5/8)(4)	BFOV(4)	BFOV(1.25)	BMBMFOV	BFOI(288)	BFOI(144)	BFOI(96)	BFOI(48)	BFOI(24)	BFO(288)	BFO(144)	BFO(96)	BFO(48)	BFO(24)	HBFO(288)	HBFO(144)	HBFO(96)	HBFO(48)	HBFO(24)	HO1
3000/22	400	-	-	-	1	-	1	1	-	1	-	945	-	-	-	945	(96)	945	(24)	-	100	(96)	100	-	-	-	-	-	-	-
3000/22-1	55	-	-	-	1	1	-	-	-	1	1	55	-	-	-	-	-	-	-	-	-	-	-	-	-	-	-	-	-	
3000/23	-	-	-	-	1	-	1	1	-	1	-	865	-	-	-	865	-	865	-	-	100	-	100	-	-	-	-	-	-	
3000/23-1	60	-	-	-	-	1	-	-	-	-	1	60	-	-	-	-	-	-	-	-	-	-	-	-	-	-	-	-	-	

Legend

Handholes
 ■ Hand hole, Medium
 ■ Hand hole, Large
 ● Flower Pot

Installation
 - - - Direct Plow
 - - - Bore Conduit
 - - - 4Way & 1.25"
 - - - Service Drop

Utility Type
 E ELECTRIC
 S STORM
 G GAS
 W WATER

Notes
 □ Cut Sheets
 - - - Centerline
 - - - Edge of Pavement
 □ Parcel Boundary
 - - - Public ROW
 □ Wetlands

Other Symbols
 □ Bore Pit
 v Culvert End
 ● Gas Valve
 ● Hydrant
 ▲ Survey Marker
 □ Ped, Existing
 □ Pole
 ● Paved Driveway
 ● Water

Measure
 → C/L To Route
 → C/L To ROW
 → ROW To ROW

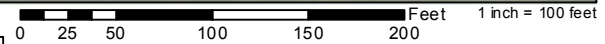


Place proposed facilities within right-of-way based on permit requirements and existing utilities locates as provided by State One-Call system

S PAGE

MAP NOT TO SCALE

Proposed Route 3' off ROW Unless Otherwise Denoted



ACCESS POINT	BM61 (4)D-R	BM61 (4)D-U	BM60 DR	BH4	BH2	BHFP	BM55	BM53	BMXX	BM2 (5/8)(8)	BM2 (5/8)(4)	BFOV (4)	BFOV (1.25)	BMBM FOV	BFOI (288)	BFOI (144)	BFOI (96)	BFOI (48)	BFOI (24)	BFO (288)	BFO (144)	BFO (96)	BFO (48)	BFO (24)	HBFO (288)	HBFO (144)	HBFO (96)	HBFO (48)	HBFO (24)	HO1
3050/02	235	-	-	-	1	-	1	1	-	1	-	1315	-	-	-	-	-	-	1315	-	100	-	-	100	-	-	-	-	-	-
3050/02-1	125	-	-	-	-	1	-	-	-	-	1	125	-	-	-	-	-	-	-	-	-	-	-	-	-	-	-	-	-	

Legend

Handholes

- Hand hole, Medium
- Hand hole, Large
- Flower Pot

Installation

- Direct Plow
- Bore Conduit
- 4Way & 1.25"
- Service Drop

Utility Type

- ELECTRIC
- STORM
- GAS
- WATER
- COM
- SANITARY
- ELECTRIC PED
- TELCO PED
- FIBER VAULT

Notes

- Cut Sheets
- Centerline
- Edge of Pavement
- Parcel Boundary
- Public ROW
- Wetlands
- Fiber Slack Coil
- Splice 144F
- Splice 24F

Other Symbols

- Bore Pit
- Culvert End
- Gas Valve
- Hydrant
- Survey Marker
- Pole
- Paved Driveway
- Water

Measure

- C/L To Route
- C/L To ROW
- ROW To ROW

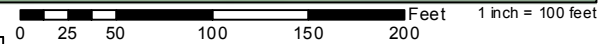


Place proposed facilities within right-of-way based on permit requirements and existing utilities locates as provided by State One-Call system

S PAGE

MAP NOT TO SCALE

Proposed Route 3' off ROW Unless Otherwise Denoted



ACCESS POINT	BM61 (4)D-R	BM61 (4)D-U	BM60 DR	BH4	BH2	BHFP	BM55	BM53	BMXX	BM2 (5/8)(8)	BM2 (5/8)(4)	BFOV (4)	BFOV (1.25)	BMBM FOV	BFOI (288)	BFOI (144)	BFOI (96)	BFOI (48)	BFOI (24)	BFO (288)	BFO (144)	BFO (96)	BFO (48)	BFO (24)	HBFO (288)	HBFO (144)	HBFO (96)	HBFO (48)	HBFO (24)	HO1
6050/03	80	-	-	-	1	-	2	-	-	-	-	760	-	-	760	144	96	48	24	288	144	96	48	24	-	-	-	-	1	-
6050/04	-	-	-	-	1	1	1	-	1	-	-	515	-	-	515	-	-	-	-	75	-	-	-	-	1	-	-	-	-	-

Legend

Handholes

- Handhole, Medium
- Handhole, Large
- Flower Pot

Installation

- Direct Plow
- Bore Conduit
- 4Way & 1.25"
- Service Drop

Utility Type

- ELECTRIC
- STORM
- GAS
- WATER
- COM
- SANITARY
- ELECTRIC PED
- TELCO PED
- FIBER VAULT

Notes

- Cut Sheets
- Centerline
- Edge of Pavement
- Parcel Boundary
- Public ROW
- Wetlands
- Fiber Slack Coil
- Splice 144F
- Splice 24F

Other Symbols

- Bore Pit
- Culvert End
- Gas Valve
- Hydrant
- Survey Marker
- Pole, Existing
- Pave Driveway
- Water

Measure

- C/L To Route
- C/L To ROW
- ROW To ROW